



## B.duo - B.tri Bruno Rainaldi, 2010-2016

IT Poltrona destrutturata composta da due o tre cilindri imbottiti di altezze diverse, collegati da una base nera in acciaio.

Rivestimenti: varie tipologie di tessuto e pelle, tessuto cliente.

EN Deconstructed armchair composed of two or three upholstered cylindrical cushions of different heights, assembled on a black steel base.

Upholsteries: various types of fabric and leather. Customer fabric.

FR Fauteuil déstructuré composé de deux ou trois cylindres rembourrés de hauteurs différentes, reliés par une base noire en acier.

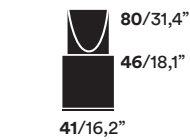
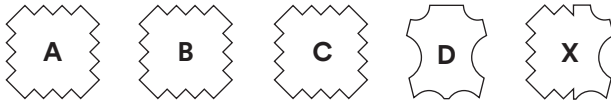
Revêtements : différents types de tissus et de cuir. Tissu du client

DE Sessel bestehend aus zwei oder drei gepolsterten Zylindern unterschiedlicher Höhe, die durch eine schwarze Bodenplatte aus Stahl verbunden sind.

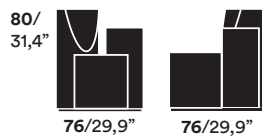
Bezüge: verschiedene Stoffe und Leder. Kundenstoff.



Certificate TB117-2013 San Francisco  
(con tessuti ignifughi / with fire resistant fabrics)



41/16,2"



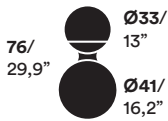
76/29,9"

76/29,9"



76/29,9"

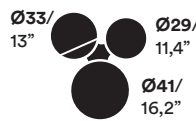
76/29,9"



76/29,9"

Ø33/13"

Ø41/16,2"



76/29,9"

Ø33/13"

Ø29/11,4"

Ø41/16,2"



76/29,9"

Ø29/11,4"

Ø33/13"

Ø41/16,2"

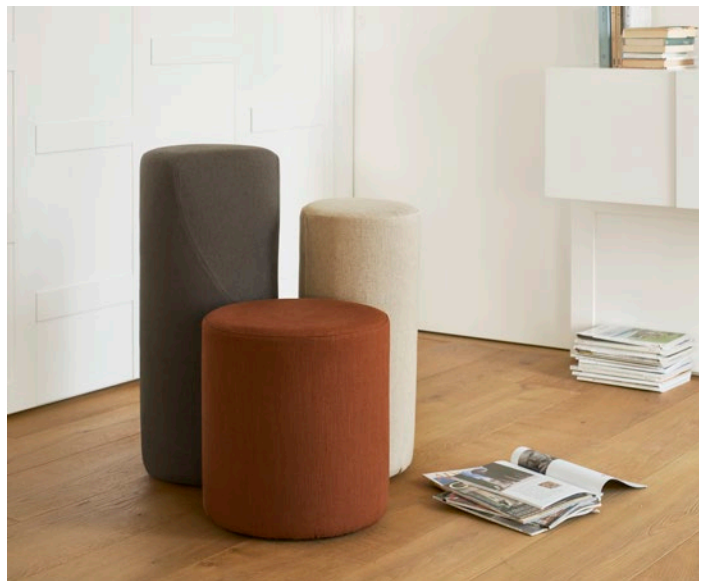


B.DUO

B.TRI SX

B.TRI DX

Esempi di utilizzo / Examples of use



### Note

I cilindri possono essere rivestiti in tessuti diversi tra loro, purché appartenenti alla stessa categoria (A / B / C / D).

The cylinders may be upholstered in different fabrics, provided that they fall within the same category (A / B / C / D).

Les cylindres peuvent être réalisés avec différents tissus, à condition qu'ils appartiennent à la même catégorie (A / B / C / D).

Die Zylinder können mit unterschiedlichen Stoffbezügen der gleichen Kategorie (A / B / C / D) ausgeführt werden.

# CATEGORIA A / CATEGORY A

## • NABUK ECOLOGICO / ECO-NUBUCK

COMPOSIZIONE / COMPOSITION  
100% polyester

CARATTERISTICHE / CHARACTERISTICS  
Ecosostenibile, vegano / Eco-friendly, vegan

DURABILITÀ / DURABILITY  
200.000 Martindale

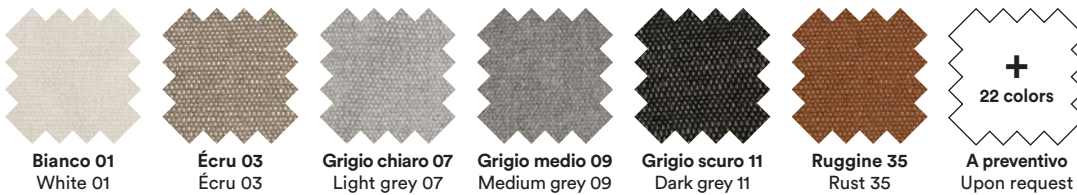


## • MISTO LINO / COTTON-LINEN BLEND FABRIC

COMPOSIZIONE / COMPOSITION  
50% recycled co, 32% vis, 18% linen

CARATTERISTICHE / CHARACTERISTICS  
Effetto naturale / Natural effect

DURABILITÀ / DURABILITY  
50.000 Martindale



## • PELLE SINTETICA VINTAGE / VINTAGE SYNTHETIC LEATHER

COMPOSIZIONE / COMPOSITION  
80% pvc, 18% pes, 2% pu

CARATTERISTICHE / CHARACTERISTICS  
Effetto invecchiato / Distressed vintage effect

DURABILITÀ / DURABILITY  
50.000 Martindale

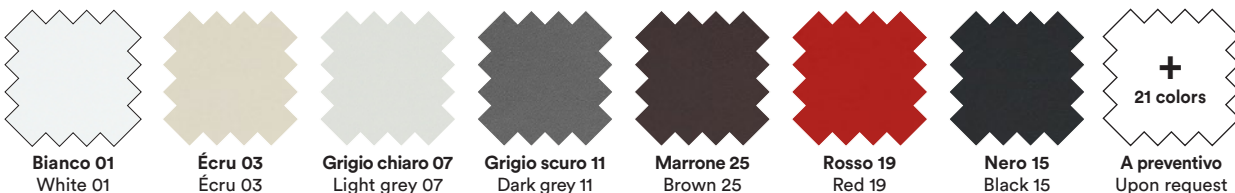


## • PELLE SINTETICA / SYNTHETIC LEATHER

COMPOSIZIONE / COMPOSITION  
72% pvc, 25% cot, 3% pu

CARATTERISTICHE / CHARACTERISTICS  
Idrorepellente, antibatterico / Water repellent, antibacterial

DURABILITÀ / DURABILITY  
100.000 Martindale



# CATEGORIA B / CATEGORY B

## • REMIX 3

**COMPOSIZIONE / COMPOSITION**  
90% new wool worsted, 10% nylon

**CARATTERISTICHE / CHARACTERISTICS**  
Ecosostenibile / Eco-friendly

**DURABILITÀ / DURABILITY**  
100.000 Martindale



**Panna 05**  
Cream 05



**Écru 03**  
Écru 03



**Grigio medio 09**  
Medium grey 09



**Marrone 25**  
Brown 25



**Verde 21**  
Green 21



**Rosso 19**  
Red 19



**Ruggine 35**  
Rust 35



**Nero 15**  
Black 15



**+  
64 colors**

**A preventivo  
Upon request**

## • VELLUTO / VELVET

**COMPOSIZIONE / COMPOSITION**  
100% cotton

**CARATTERISTICHE / CHARACTERISTICS**  
Idrorepellente / Water repellent

**DURABILITÀ / DURABILITY**  
100.000 Martindale



**Bianco 01**  
White 01



**Écru 03**  
Écru 03



**Grigio chiaro 07**  
Light grey 07



**Grigio medio 09**  
Medium grey 09



**Marrone 25**  
Brown 25



**Verde 21**  
Green 21



**Rosso 19**  
Red 19



**Nero 15**  
Black 15



**+  
192 colors**

**A preventivo  
Upon request**

## • REVIVE 1

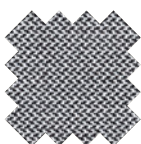
**COMPOSIZIONE / COMPOSITION**  
100% recycled polyester FR

**CARATTERISTICHE / CHARACTERISTICS**  
Ecosostenibile / Eco-friendly

**DURABILITÀ / DURABILITY**  
60.000 Martindale



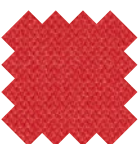
**Écru 03**  
Écru 03



**Grigio medio 09**  
Medium grey 09



**Marrone 25**  
Brown 25



**Rosso 19**  
Red 19



**Nero 15**  
Black 15



**+  
20 colors**

**A preventivo  
Upon request**

## • TESSUTO ECOLOGICO / ECOLOGICAL FABRIC

**COMPOSIZIONE / COMPOSITION**  
100% polyester

**CARATTERISTICHE / CHARACTERISTICS**  
Bielastico, ecosostenibile / Bi-elastic, eco-friendly

**DURABILITÀ / DURABILITY**  
85.000 Martindale



**Panna 05**  
Cream 05



**Écru 03**  
Écru 03



**Grigio chiaro 07**  
Light grey 07



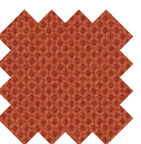
**Grigio medio 09**  
Medium grey 09



**Grigio scuro 11**  
Dark grey 11



**Rosso 19**  
Red 19



**Ruggine 35**  
Rust 35



**Nero 15**  
Black 15



**+  
18 colors**

**A preventivo  
Upon request**

## • TREVIRA

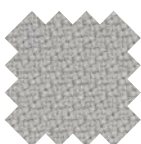
**COMPOSIZIONE / COMPOSITION**  
100% Trevira

**CARATTERISTICHE / CHARACTERISTICS**  
Ecosostenibile / Eco-friendly

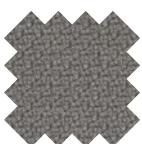
**DURABILITÀ / DURABILITY**  
100.000 Martindale



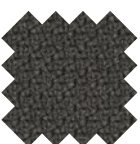
**Écru 03**  
Écru 03



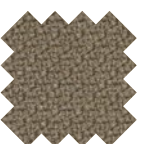
**Grigio chiaro 07**  
Light grey 07



**Grigio medio 09**  
Medium grey 09



**Grigio scuro 11**  
Dark grey 11



**Fango 23**  
Mud 23



**Rosso 19**  
Red 19



**Ruggine 35**  
Rust 35



**Nero 15**  
Black 15



**+  
49 colors**

**A preventivo  
Upon request**

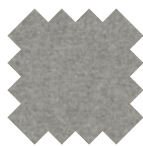
## CATEGORIA C / CATEGORY C

### • DIVINA MELANGE 3

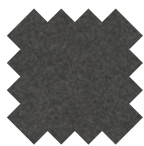
COMPOSIZIONE / COMPOSITION  
100% new wool

CARATTERISTICHE / CHARACTERISTICS  
Ecosostenibile / Eco-friendly

DURABILITÀ / DURABILITY  
45.000 Martindale



Grigio chiaro 07  
Light grey 07



Grigio medio 09  
Medium grey 09



Grigio scuro 11  
Dark grey 11



Marrone 25  
Brown 25



Rosso 19  
Red 19



Verde 21  
Green 21



A preventivo  
Upon request

### • DIVINA 3

COMPOSIZIONE / COMPOSITION  
100% new wool

CARATTERISTICHE / CHARACTERISTICS  
Ecosostenibile / Eco-friendly

DURABILITÀ / DURABILITY  
45.000 Martindale



Bianco 01  
White 01



Grigio chiaro 07  
Light grey 07



Grigio scuro 11  
Dark grey 11



Fango 23  
Mud 23



Rosso 19  
Red 19



Ruggine 35  
Rust 35



Nero 15  
Black 15



A preventivo  
Upon request

## CATEGORIA D / CATEGORY D

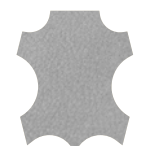
### • PELLE VINTAGE / VINTAGE LEATHER

COMPOSIZIONE / COMPOSITION  
Concia all'anilina / Aniline tanning

CARATTERISTICHE / CHARACTERISTICS  
Effetto invecchiato / Distressed vintage effect



Écru 03  
Écru 03



Grigio chiaro 07  
Light grey 07



Grigio medio 09  
Medium grey 09



Grigio scuro 11  
Dark grey 11



Biscotto 27  
Biscuit 27



Cioccolato 31  
Chocolate 31



Carbone 29  
Carbon 29



Verde 21  
Green 21

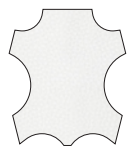


A preventivo  
Upon request

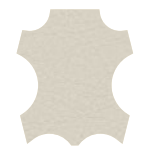
### • PELLE / LEATHER

COMPOSIZIONE / COMPOSITION  
Concia al cromo / Chrome tanning

CARATTERISTICHE / CHARACTERISTICS  
Mezzo fiore / Lightly buffed natural grain



Bianco 01  
White 01



Écru 03  
Écru 03



Rosso 19  
Red 19



Marrone 25  
Brown 25



Nero 15  
Black 15



A preventivo  
Upon request