



## Guelfo Lapo Ciatti, 2015-2018

**IT** Bergère imbottita con struttura in nickel nero. Pouf imbottito.  
Non sfoderabili.

**Rivestimenti:** varie tipologie di tessuto e pelle, tessuto cliente.

**Lavorazione** capitonné.

**FR** Fauteuil rembourré avec structure en nickel noir. Pouf rembourré.  
Rembourrage non amovible.

**Revêtements :** divers types de tissus et de cuir. Tissu du client.

Capitonné.

**EN** Upholstered wingback with black nickel structure. Upholstered footstool.

Non-removable upholstery.

**Upholsteries:** various types of fabric and leather, customer fabric. Capitonné work.

**DE** Gepolsterter Sessel mit Gestell in nickelschwarz. Hocker gepolstert.

Nicht abziehbar.

**Bezüge:** verschiedene Arten von Stoff und Leder mit Knopfsteppung.

Kundenstoff.



**Finiture base / Finishes base / Finitions base / Ausführungen Basis**



**Nickel nero**  
Black nickel  
Nickel noir  
Nickel schwarz



**Finiture a preventivo**  
Finishes upon request  
Finitions sur devis  
Kostenvoranschlag für Ausführungen

**Rivestimenti / Upholsteries / Revêtements / Bezüge**



\* ad eccezione di nubuk ecologico e pelliccia ecologica  
\* except for ecological nubuck and faux fur  
\* sauf pour nubuck écologique et fourrure écologique  
\* außer Öko-Nubukleder und Kunstpelz



124/49"

46/18"

79/31,1"

96/37,7"

WINGBACK



42/16,5"

45/17,7"

40/15,7"

POUF



Pelle nera  
Black leather



Velluto nero  
Black velvet

# CATEGORIA A / CATEGORY A

## • NABUK ECOLOGICO / ECO-NUBUCK

COMPOSIZIONE / COMPOSITION  
100% polyester

CARATTERISTICHE / CHARACTERISTICS  
Ecosostenibile / Eco-friendly

DURABILITÀ / DURABILITY  
200.000 Martindale



**Bianco 01**  
White 01



**Écru 03**  
Écru 03



**Marrone 25**  
Brown 25



**Grigio chiaro 07**  
Light grey 07



**Grigio scuro 11**  
Dark grey 11



**Nero 15**  
Black 15



**Verde 21**  
Green 21



**Rosso 19**  
Red 19



**A preventivo**  
Upon request

## • MISTO LINO / COTTON-LINEN BLEND FABRIC

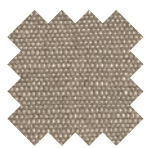
COMPOSIZIONE / COMPOSITION  
50% recycled co, 32% vis, 18% linen

CARATTERISTICHE / CHARACTERISTICS  
Effetto naturale / Natural effect

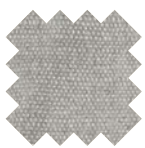
DURABILITÀ / DURABILITY  
50.000 Martindale



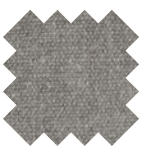
**Bianco 01**  
White 01



**Écru 03**  
Écru 03



**Grigio chiaro 07**  
Light grey 07



**Grigio medio 09**  
Medium grey 09



**Grigio scuro 11**  
Dark grey 11



**Ruggine 35**  
Rust 35



**A preventivo**  
Upon request

## • PELLE SINTETICA VINTAGE / VINTAGE SYNTHETIC LEATHER

COMPOSIZIONE / COMPOSITION  
80% pvc, 18% pes, 2% pu

CARATTERISTICHE / CHARACTERISTICS  
Effetto invecchiato / Distressed vintage effect

DURABILITÀ / DURABILITY  
50.000 Martindale



**Bianco 01**  
White 01



**Grigio chiaro 07**  
Light grey 07



**Marrone 25**  
Brown 25



**Verde 21**  
Green 21



**Nero 15**  
Black 15



**A preventivo**  
Upon request

## • PELLE SINTETICA / SYNTHETIC LEATHER

COMPOSIZIONE / COMPOSITION  
72% pvc, 25% cot, 3% pu

CARATTERISTICHE / CHARACTERISTICS  
Idrorepellente, antibatterico / Water repellent, antibacterial

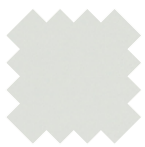
DURABILITÀ / DURABILITY  
100.000 Martindale



**Bianco 01**  
White 01



**Écru 03**  
Écru 03



**Grigio chiaro 07**  
Light grey 07



**Grigio scuro 11**  
Dark grey 11



**Marrone 25**  
Brown 25



**Rosso 19**  
Red 19



**Nero 15**  
Black 15



**A preventivo**  
Upon request

# CATEGORIA B / CATEGORY B

## • REMIX 3

COMPOSIZIONE / COMPOSITION  
90% new wool worsted, 10% nylon

CARATTERISTICHE / CHARACTERISTICS  
Ecosostenibile / Eco-friendly

DURABILITÀ / DURABILITY  
100.000 Martindale



Panna 05  
Cream 05



Ècru 03  
Ècru 03



Grigio medio 09  
Medium grey 09



Marrone 25  
Brown 25



Verde 21  
Green 21



Rosso 19  
Red 19



Ruggine 35  
Rust 35



Nero 15  
Black 15



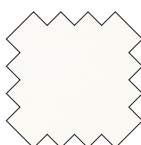
A preventivo  
Upon request

## • TESSUTO TECNICO / TECHNICAL FABRIC

COMPOSIZIONE / COMPOSITION  
80% PA, 20% Elastane

CARATTERISTICHE / CHARACTERISTICS  
Bielastico / Bi-elastic

DURABILITÀ / DURABILITY  
50.000 Martindale



Bianco 01  
White 01



Grigio medio 09  
Medium grey 09



Grigio scuro 11  
Dark grey 11



Fango 23  
Mud 23



Marrone 25  
Brown 25



Rosso 19  
Red 19



Nero 15  
Black 15



A preventivo  
Upon request

## • VELLUTO / VELVET

COMPOSIZIONE / COMPOSITION  
100% cotton

CARATTERISTICHE / CHARACTERISTICS  
Idrorepellente / Water repellent

DURABILITÀ / DURABILITY  
100.000 Martindale



Bianco 01  
White 01



Ècru 03  
Ècru 03



Grigio chiaro 07  
Light grey 07



Grigio medio 09  
Medium grey 09



Marrone 25  
Brown 25



Verde 21  
Green 21



Rosso 19  
Red 19



Nero 15  
Black 15



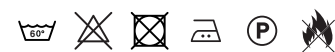
A preventivo  
Upon request

## • REVIVE 1

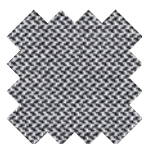
COMPOSIZIONE / COMPOSITION  
100% recycled polyester FR

CARATTERISTICHE / CHARACTERISTICS  
Ecosostenibile / Eco-friendly

DURABILITÀ / DURABILITY  
60.000 Martindale



Ècru 03  
Ècru 03



Grigio medio 09  
Medium grey 09



Marrone 25  
Brown 25



Rosso 19  
Red 19



Nero 15  
Black 15



A preventivo  
Upon request

## • TESSUTO ECOLOGICO / ECOLOGICAL FABRIC

COMPOSIZIONE / COMPOSITION  
100% polyester

CARATTERISTICHE / CHARACTERISTICS  
Bielastico, ecosostenibile / Bi-elastic, eco-friendly

DURABILITÀ / DURABILITY  
85.000 Martindale



Panna 05  
Cream 05



Ècru 03  
Ècru 03



Grigio chiaro 07  
Light grey 07



Grigio medio 09  
Medium grey 09



Grigio scuro 11  
Dark grey 11



Rosso 19  
Red 19



Ruggine 35  
Rust 35



Nero 15  
Black 15



A preventivo  
Upon request

## • TREVIRA

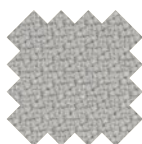
COMPOSIZIONE / COMPOSITION  
100% Trevira

CARATTERISTICHE / CHARACTERISTICS  
Ecosostenibile / Eco-friendly

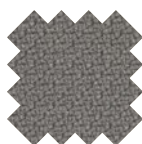
DURABILITÀ / DURABILITY  
100.000 Martindale



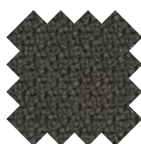
Ècru 03  
Ècru 03



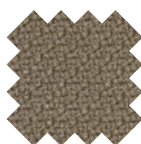
Grigio chiaro 07  
Light grey 07



Grigio medio 09  
Medium grey 09



Grigio scuro 11  
Dark grey 11



Fango 23  
Mud 23



Rosso 19  
Red 19



Ruggine 35  
Rust 35



Nero 15  
Black 15



A preventivo  
Upon request

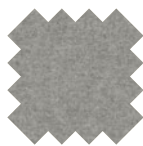
## CATEGORIA C / CATEGORY C

### • DIVINA MELANGE 3

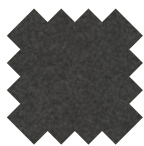
COMPOSIZIONE / COMPOSITION  
100% new wool

CARATTERISTICHE / CHARACTERISTICS  
Ecosostenibile / Eco-friendly

DURABILITÀ / DURABILITY  
45.000 Martindale



Grigio chiaro 07  
Light grey 07



Grigio medio 09  
Medium grey 09



Grigio scuro 11  
Dark grey 11



Marrone 25  
Brown 25



Rosso 19  
Red 19



Verde 21  
Green 21



A preventivo  
Upon request

### • DIVINA 3

COMPOSIZIONE / COMPOSITION  
100% new wool

CARATTERISTICHE / CHARACTERISTICS  
Ecosostenibile / Eco-friendly

DURABILITÀ / DURABILITY  
45.000 Martindale



Bianco 01  
White 01



Grigio chiaro 07  
Light grey 07



Grigio scuro 11  
Dark grey 11



Fango 23  
Mud 23



Rosso 19  
Red 19



Ruggine 35  
Rust 35



Nero 15  
Black 15



A preventivo  
Upon request

### • PELLICCIA ECOLOGICA / FAUX FUR

COMPOSIZIONE / COMPOSITION  
100% polyester

CARATTERISTICHE / CHARACTERISTICS  
Pelo corto / Short hair

DURABILITÀ / DURABILITY  
50.000 Martindale



Bianco 01  
White 01



Rosa 39  
Pink 39



Nero 15  
Black 15



A preventivo  
Upon request

## CATEGORIA D / CATEGORY D

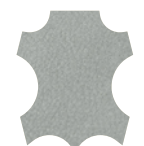
### • PELLE VINTAGE / VINTAGE LEATHER

COMPOSIZIONE / COMPOSITION  
Concia all'anilina / Aniline tanning

CARATTERISTICHE / CHARACTERISTICS  
Effetto invecchiato / Distressed vintage effect



Ècru 03  
Ècru 03



Grigio chiaro 07  
Light grey 07



Grigio medio 09  
Medium grey 09



Grigio scuro 11  
Dark grey 11



Biscotto 27  
Biscuit 27



Cioccolato 31  
Chocolate 31



Carbone 29  
Carbon 29



Verde 21  
Green 21

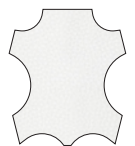


A preventivo  
Upon request

### • PELLE / LEATHER

COMPOSIZIONE / COMPOSITION  
Concia al cromo / Chrome tanning

CARATTERISTICHE / CHARACTERISTICS  
Mezzo fiore / Lightly buffed natural grain



Bianco 01  
White 01



Ècru 03  
Ècru 03



Rosso 19  
Red 19



Marrone 25  
Brown 25



Nero 15  
Black 15



A preventivo  
Upon request